

technical rider

laGeste

ATELIER laGeste

technical rider (October 2022)

ATELIER laGeste

laGeste

ADDRESS - Atelier laGeste

Nieuwevaart 118 / F007
B - 9000, Ghent



Loading, smallest passage: 2m80 (large) x 2m25 (high).

1

laGeste

technical rider - ATELIER laGeste

STUDIO - Atelier laGeste



Accessibility: the rehearsal studio and ground floor level spaces, including toilet and shower, are wheelchair accessible.

Wooden sprung floor with a surface of approximately 9m x 15m, maximum load 500kg/m².

Ballet floor (black) covers the entire surface of the floor.

The room can be made dark.

White painted brick walls, black cloths on rail on three sides.

A concrete support beam runs at regular intervals across the width of the hall, the free height below varies from a minimum of 4m43 to 4m50. The free height under the ceiling between the support beams varies from a minimum of 4m83 to 4m95. There are 2 steel I-beams on the sides of the studio. On these beams there are 5 trusses Prolyte X30D (triangle 30cm). Maximum free height under the trusses: 4m42.

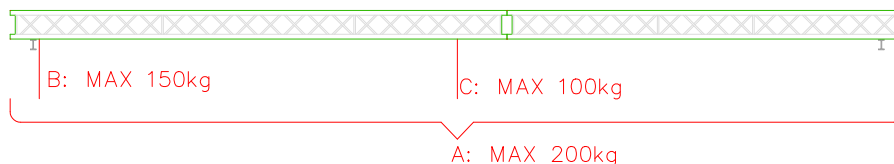
Maximum point load close to one of the I profiles is 150kg.

Maximum point load in the middle of the truss is 100kg.

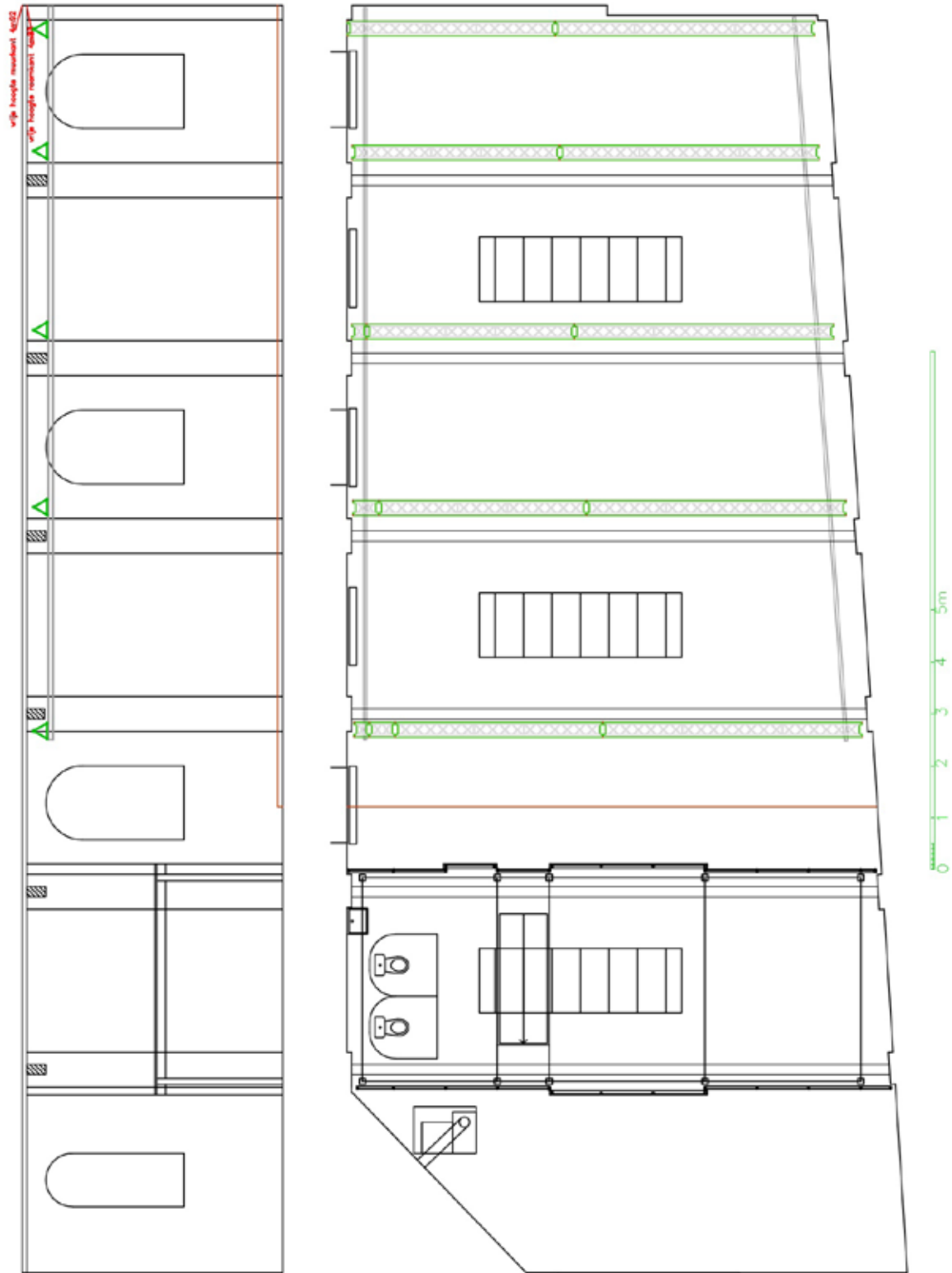
Maximum total load of the entire truss is 200kg.

Maximum number of people in the rehearsal studio S18: 49.

Smallest doorway to bring material in: 2m80 wide and 2m20 high.



A: maximale totale belasting verdeeld 200kg
B: maximale puntlast op het I-profiel 150kg
C: maximale puntlast in het midden 100kg



ANCILLARY SPACES - Atelier laGeste

ENTRANCE / GROUND FLOOR



One room with passage from entrance to the studio, with toilet and shower, accessible for wheel-chair users.

FIRST FLOOR



One room with toilet, shower, table, chairs.

SOUND - Atelier laGeste

Sound desk Mackie 1402 VLZ Pro (14ch, 6x mono & 4x stereo)
+ adapter 2x jack - stereo mini jack

1x CD player Sony CDP XE270

2x active speaker Mackie SRM 450

LIGHT - Atelier laGeste

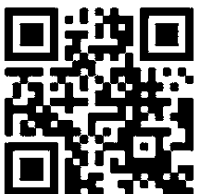
No standard lighting material in this studio.

Cables to the trusses :

- multi with 8 channels in each truss (schuko connection)
- break outs on the spot where there is a 63A connection for dimmers.

CONTACT - Atelier laGeste

Jan Mergaert - jan@lageste.be



WRITTEN
BY
THE
BODY

laGeste