



© Chris Van der Burght

Technical Rider (February 2025)

Out of Context - for Pina

Alain Platel | laGeste

GENERAL

The première of *Out of Context - for Pina* took place on Wednesday January 13th, 2010 in Brussels.

Duration: 85', no break.

Out of Context - for Pina is a performance with 9 performers and travels with 2 technicians, 1 tour manager and 1 choreographer.

The organiser provides coffee, tea, fresh fruit.

The organiser provides sufficient mineral water in bottles (50cl) on stage for the dancers, sufficient dressing rooms and showers and sufficient towels (at least 1 towel for each person).

The organiser provides a production office (with internet access).

STAGE

The organiser provides the following.

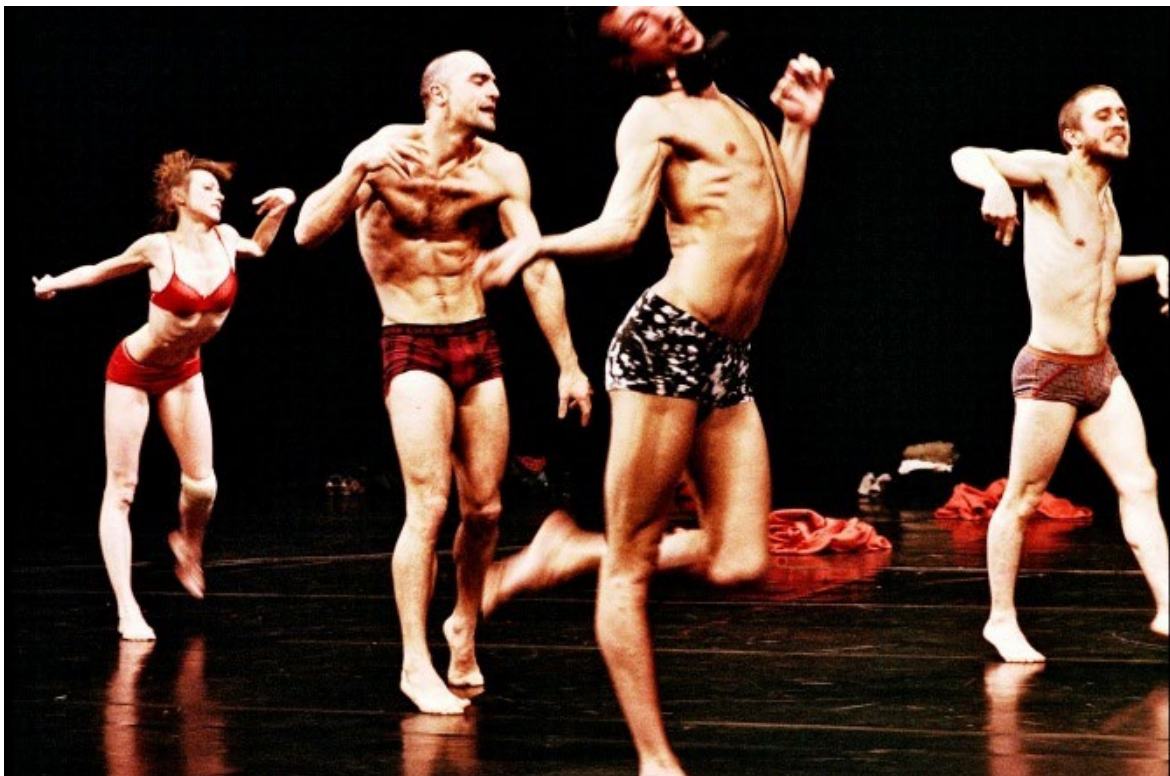
Minimum surface 12m x 12m, minimum height 8m, minimum proscenium opening: 10m. Every venue less big than these minimal dimensions, should be discussed with and approved by the technical director of laGeste.

A wooden sprung floor, no ramp.

A black dance carpet, covering the whole surface.

Masking: front curtain (opens at the beginning, stays open), black box, black backdrop in two pieces on rail (at the end of the performance two dancers slowly pull the backdrop open just a little).

At the beginning of the performance, the dancers go on stage, coming from the audience area. We need seats for the 9 performers in the audience, randomly dispersed.



© Chris Van der Burght

SET

Out of Context – for Pina travels without set.

COSTUMES

A wardrobe person is required every day to wash (including hand wash, but no dry cleaning), dry and iron the clothes, to do small repair works (if necessary). The clothes have to be ready 4 hours before each performance.

dancer	costume	hand wash	machine 40°	dryer	ironing	remark
Elie Tass	slip	x				
	blanket		x	x	x	not necessary after each performance
Emile Josse	slip	x				
	blanket		x	x	x	not necessary after each performance
Romeu Runa	slip	x				
	Kneepads		x	x		not necessary after each performance
	blanket		x	x	x	not necessary after each performance
Mathieu Desseigne Ravel	slip	x				
	blanket		x	x	x	not necessary after each performance
Ross McCormack	slip	x				
	blanket		x	x	x	not necessary after each performance
Hyo Seung Ye	slip	x				
	blanket		x	x	x	not necessary after each performance
Rosalba Torres	slip	x				
	BH	x				
	blanket		x	x	x	not necessary after each performance
Kaori Ito	slip	x				
	String	x				
	Bra	x				
	blanket		x	x	x	not necessary after each performance
Mélanie Lomoff	slip	x				
	Kneepads		x	x		not necessary after each performance
	Bra	x				
	blanket		x	x	x	not necessary after each performance

PLANNING

Before arrival laGeste

If possible, and in consultation with laGeste: black dance carpet, masking. In this case, if dance carpet and masking is completely installed before set up starts, then we need one stage technician less during set up.

Rehearsal space

from the first day: rehearsal space for the dancers.

Day 1

morning: discuss set up, set up

afternoon: set up, sound check, light check, spacing

evening: first performance (or general rehearsal, in case there is one)

during performance, we need one technician for the front curtain, and a sound and light technician stand by (sound and light are controlled by the two technicians of *Out of Context - for Pina*)

Day 2

3h before the performance: dancers on stage

afternoon: light check, sound check, rehearsal & spacing

evening: performance

Last day

3h before the performance: dancers on stage

afternoon: light check, sound check, rehearsal & spacing

evening: performance

after the last performance: strike

Remark

In consultation with the technical director of laGeste, the schedule can be adapted to the usual working hours of the theatre.

If the performance has not been played for a certain period, it is possible that an extra day for set up (and rehearsal) is necessary.

before arrival Cde la B	if possible, and in consultation with laGeste
	black dancefloor, masking

day 1		stage	light	sound	costumes
9:00	<i>discuss set up</i>	2	3	1	1
9:00-12:00	<i>set up</i>	2	3	1	1
12:00-13:00	<i>lunch</i>				
14:00-18:30	<i>set up</i>	1	2	1	1
16:00-18:30	<i>check/spacing/rehearsal</i>	1	2	1	1
18:30-19:30	<i>dinner</i>				
19:30-20:00	<i>prep performance</i>	1	1	1	
20:00	Out of Context	1	1	1	
21:20	<i>end performance</i>				1

other days		stage	light	sound	costumes
before 17:00	<i>costumes ready</i>				1
17:00	<i>arrival dancers</i>	1	1	1	
17:00-18:30	<i>notes/spacing/checks</i>	1	1	1	
18:30-19:30	<i>Dinner</i>				
19:30-20:00	<i>prep performance</i>	1	1	1	
20:00	Out of Context	1	1	1	
21:20	<i>end performance</i>				1

SOUND

Creation: Sam Serruys // Tour: Bart Uyttersprot or Carlo Thompson.

The sound system will be free of hum, hiss or buzz. It will provide even coverage of the different audience areas.

The sound mixer will be placed in an acoustically acceptable position in the central axis of the auditorium, not under a balcony.

The organiser provides 3 intercom posts (sound, light, stage).

the organiser provides the following sound equipment.

mixer & effects

-digital mixing desk (Midas/Soundcraft/Yamaha), 16 channels + 6 aux (4 pre & 2 post)

-1 table (+/-1m x 0m50) for laptop with Ableton Live, apogee duet, kaosspad, controllers, mp3 players, brought by laGeste

speakers FOH/amps

L/R + center cluster, adapted to the venue

monitoring speakers/amps

L/R monitor upstage (2x sub & top, the top on stand on top of the sub)

mics&stands

2x high black mic stand (for 2 vocal mics brought by laGeste)

cables

the necessary cables, including 6x XLR-cable of 20m

input for the two mics: downstage, 1 on each side

remark

Alternatives for the audio material provided by the organiser must be checked with and approved by the sound engineer of *Out of Context - for Pina*.

LIGHTS

Creation: Carlo Bourguignon // Tour: Carlo Bourguignon ou Luc Laroy.

the organiser provides the following light equipment.

lightcomputer,

50 dimmers 2kW, 5 dimmers 5kW

5x fresnel 5kW (4x with barndoors)

8x fresnel 2kW (4x with barndoors)

3x zoom profile 2kW (with iris)

2x pc 1kW

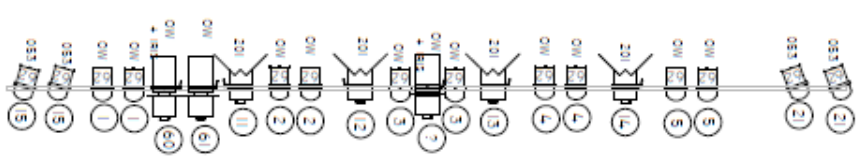
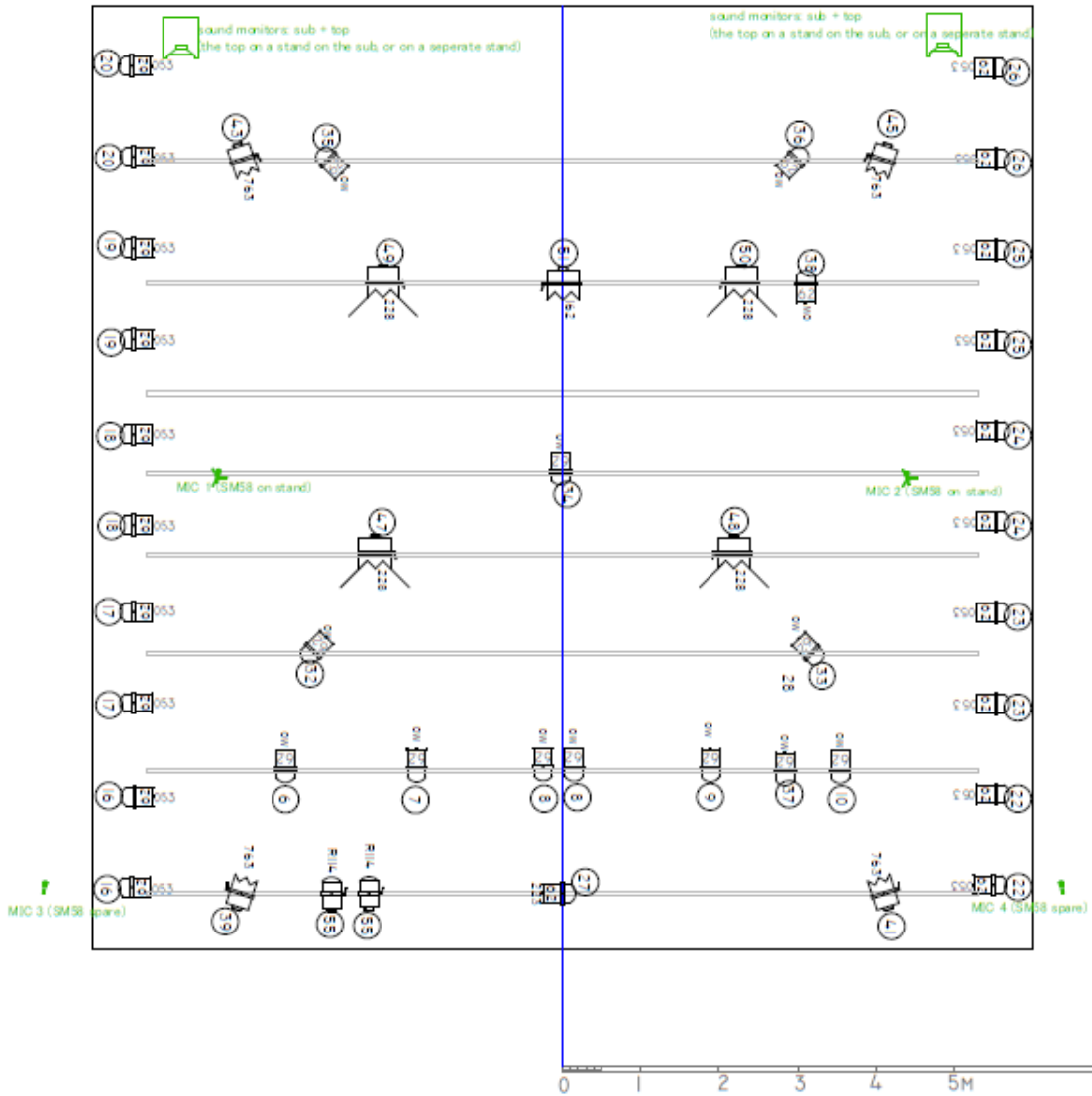
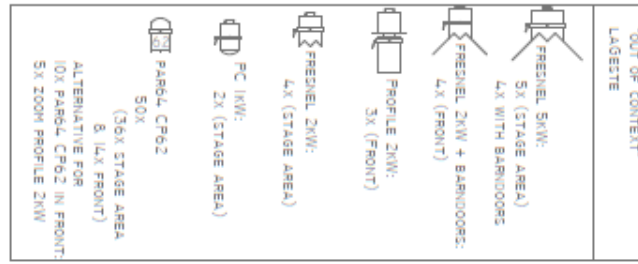
50x par64 CP62

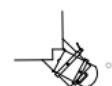
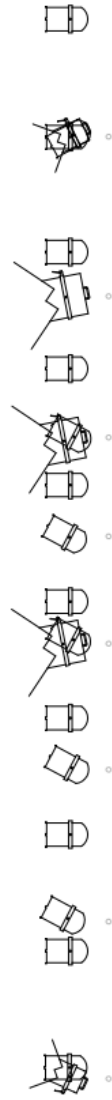
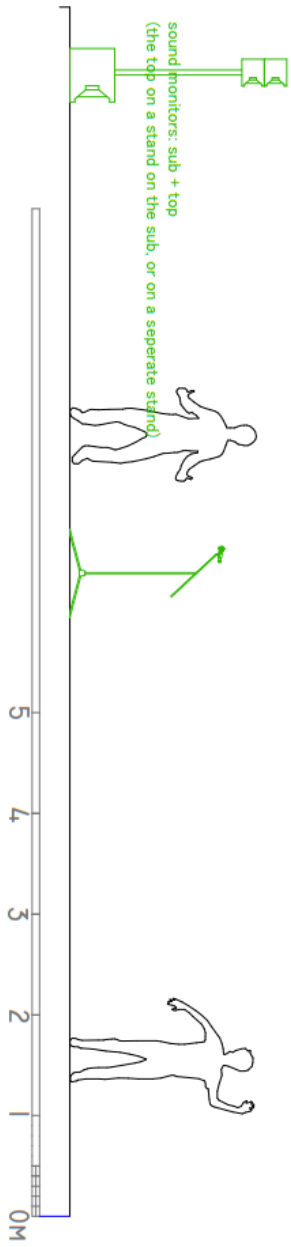
alternative for 10x par64 in front (circuit 1→5): 5x zoom profile 2kW

colours: LEE053 (paler lavender), LEE162 (bastard amber), LEE201 (full c t blue), LEE228 (brushed silk), LEE763 (wheat), Rosco114 (hamburg frost)

Remark

-possible alternative for fresnels in front: pc or profile with LEE254 (new hampshire frost)





DIVERS

The organiser has at the disposal the name and phone number of a physiotherapist who is available on the days when there is a performance.

Everything in this rider, provided by the organiser, is also at the expense of the organiser.

CONTACT

Technical direction
Rubben Smits
T/ +32 474 209 516
E/ rubben@lageste.be

laGeste
Bijlokesite
Bijlokekaai 1 - 9000 Ghent - Belgium
E/ info@lageste.be
T/ +32 472 09 15 81
www.lageste.be