

technical rider

(update April 2023)

laGeste

Grandpa Puss ; or how God disappeared

Lisaboa Houbrechts

laGeste (les ballets C de la B + kabinet k)

technical rider (update April 2023)

Grandpa Puss ; or how God disappeared

GENERAL

The première of *Grandpa Puss ; or how God disappeared* took place in Gent on Wednesday Februari 1st, 2023.

Duration and break : 1h45, no break.

Grandpa Puss ; or how God disappeared is a performance with 13 performers on stage, 4 of them are children younger than 16 years old, and travels with 3 or 4 technicians, a tour manager, an accompanist for the children and a director.

In the dressing rooms, we appreciate water, coffee, tea, nuts, energy bars, biscuits and fruits (bananas, apples, lemon).

The organizer provides sufficient dressing rooms with showers and sufficient towels (at least 1 towel per person).

The organizer provides an office/dressing room for the tourmanager, with internet access.

STAGE

The organizer provides the following.

Minimal surface 14m deep behind the proscenium arch x 16m wide, minimal free height 15m.

Every venue less big than this minimal dimensions, should be discussed with and approved by the technical director of laGeste.

Black wooden floor. In case the floor is not black: a black dance carpet covering the whole surface.

Black masking: black box, as big as possible, with a passage behind the black backdrop / black borders.

Front curtain (guillotine): opens when the performance starts, closes after the last applause.

On stage and around we need some solid tables and chairs:

- two tables and a chair for the wireless material of the sound
- one table and chair for the stage manager of laGeste
- one table for the props
- one table for personal material
- a table on the prompt side (with a mirror and a lamp brought by laGeste)
- 3 chairs behind the set

SET

The set will probably consist of the following elements.

A cube 3m40 x 3m40 x 3m40. The front of the cube can open.

Other set éléments ladders, blocks,...

A « triptych » of three black molton curtains, 8m large (the curtains are 8m90, they are knotted to a width of 8m) x 6m40 high. laGeste brings Fastco tension rods for these 3 curtains. For these 3 curtains, the organiser provides 3 tubes, each exactly 8m long, to be hung under the fly bars on specific positions. Height : +/-8m.

Weight of each curtain + tension rod : 40kg.

Behind the upstage part of the triptych, the organiser provides a tube of exactly 7m long, for asymmetrical floodlights.

During the performance, scattered newspapers are scattered across the stage. After each performance, we need 30 minutes to clean up.



cube (front)



scène



cube (back)

COSTUMES

A wardrobe person is required every day to wash (including dry cleaning, and hand wash), dry and iron the clothes, and to do small repair works (if necessary). The clothes have to be ready 4 hours before each performance (or before the general rehearsal, in case there is one). Please provide some laundry baskets. The wardrobe person is also necessary after each performance.

Exact planning of the wardrobe person depends on the tour and will be determined for each venue.

Details : see document "Vake Poes - LAUNDRY overview".

PLANNING

Day 1

- morning : discuss set up, set up
- afternoon and evening : set up

Day 2

- morning : finish set up
- afternoon : briefing, spacing, rehearsal, miking, sound check (cast on stage 6h before the performance), clean stage during the break of the cast
- evening : first performance (or general rehearsal, in case there is one)
(during rehearsals and performances, light and sound are operated by technicians of *Grandpa Puss ; or how God disappeared*)

Day 3

- afternoon : technical check, briefing, miking, sound check (cast on stage 3h before the performance), clean stage during the break of the cast
- evening : performance

Last day, immediately after the last performance

strike with the same crew as set up

In consultation the planning can be adapted to the standard working hours of the theatre.

In case the technicians also do the (un)loading of the truck, the extra stagehands for (un)loading are not necessary.

before arrival laGeste (if possible & in consultation)	
	<i>pre hang light</i>
	<i>masking</i>

day 1		unload	set	light	sound
9:00	<i>discuss set up</i>	2	4	3	2
9:00-11:00	<i>unload & set up</i>	2	4	3	2
11:00-13:00	<i>light / sound / tryptich</i>		4	3	2
14:00-18:00	<i>check surtitling, set up set, light, sound</i>		4	3	2
19:00-22:00	<i>light</i>		2	3	1

day 2			set	light	sound
9:00-13:00	<i>set up, focus, cues</i>		2	2	1
13:00	<i>arrival tourmanager</i>		2	1	1
14:00-16:30	<i>arrival cast, miking, sound check</i>		2	1	1
16:30-17:30	<i>spacing, light positions</i>		2	1	1
17:30-18:30	<i>cast break & clean stage</i>		2	1	1
18:30-19:00	<i>miking</i>		1	1	1
19:00-19:30	<i>line check (in costume)</i>		1	1	1
19:30-20:00	<i>prep performance</i>		1	1	1
20:00	Grandpa Puss		1	1	1
21:45-22:15	<i>clean stage</i>		2	1	1

day 3			set	light	sound
before 16:00	<i>costumes ready</i>				
16:00	<i>arrival crew & tour manager</i>		1	1	1
17:00	<i>arrival kids</i>		1	1	1
17:00-18:00	<i>cast break & clean stage</i>		1	1	1
17:45	<i>arrival cast</i>		1	1	1
18:00-18:30	<i>notes & briefing</i>		1	1	1
18:30-19:00	<i>miking</i>		1	1	1
19:00-19:30	<i>line check (in costume)</i>		1	1	1
19:30-20:00	<i>prep performance</i>		1	1	1
20:00	Grandpa Puss		1	1	1
21:45-22:15	<i>clean stage</i>		2	1	1

2

last day		load	set	light	sound
before 16:00	<i>costumes ready</i>				
16:00	<i>arrival crew & tour manager</i>		1	1	1
17:00	<i>arrival kids</i>		1	1	1
17:00-18:00	<i>cast break & clean stage</i>		1	1	1
17:45	<i>arrival cast</i>		1	1	1
18:00-18:30	<i>notes & briefing</i>		1	1	1
18:30-19:00	<i>miking</i>		1	1	1
18:30-19:30	<i>line check (in costume)</i>		1	1	1
19:00-19:30	<i>prep performance</i>		1	1	1
20:00	Grandpa Puss		1	1	1
21:45	<i>strike / load</i>	2	4	3	2

SOUND

Creation & tour: Brecht Beuselinck (+32) 472 362 492, brechtbeuselinck@mac.com

The organizer provides the following sound equipment.

PA system of the highest quality (Meyer, L'Acoustics, d&b audioteknik,...).

The PA system will provide even coverage of the different audience areas.

The sound mixer will be placed in an acoustically acceptable position in the central axis of the auditorium, not under a balcony.

Monitoring: monitors stage left and stage right behind the proscenium arch (the other monitors are provided by laGeste).

RF/Wireless system requirements.

The organizer provides a sixteen (16) channels wireless system (Sennheiser 6000 series or Shure Axient) and the necessary batteries for each performance and rehearsal and a 5 channels wireless in ear system and the necessary batteries for each performance and rehearsal.

The organizer provides the wireless system with antennae distribution system as specified by a local RF co-ordinator. A technician must accompany the delivery to do an onsite RF co-ordination and set up to make sure the system is stable and free of interference and drop out. The organizer provides a technician who stays on stage with the system during the whole period of set up, rehearsals and performances.

Intercom, the organizer provides 5 intercom posts, with minimal 1 of them wireless: surtitles, sound, light, stage manager, front curtain.

The organizer provides 2 or 3 tables on the spot of the wireless material.



Grandpa Puss ; or how God disappeared provides the following sound equipment :

- sound mixing desk DiGiCo SD9
- stagebox D-rack cat5
- cable drum with cat5 (75m)
- mic's
- some active speakers



LIGHT

Creation : Fabiana Piccioli

Tour: Bennert Vancottem (+32) 498 742 091, bennert.vancottem@gmail.com

Provided by laGeste.

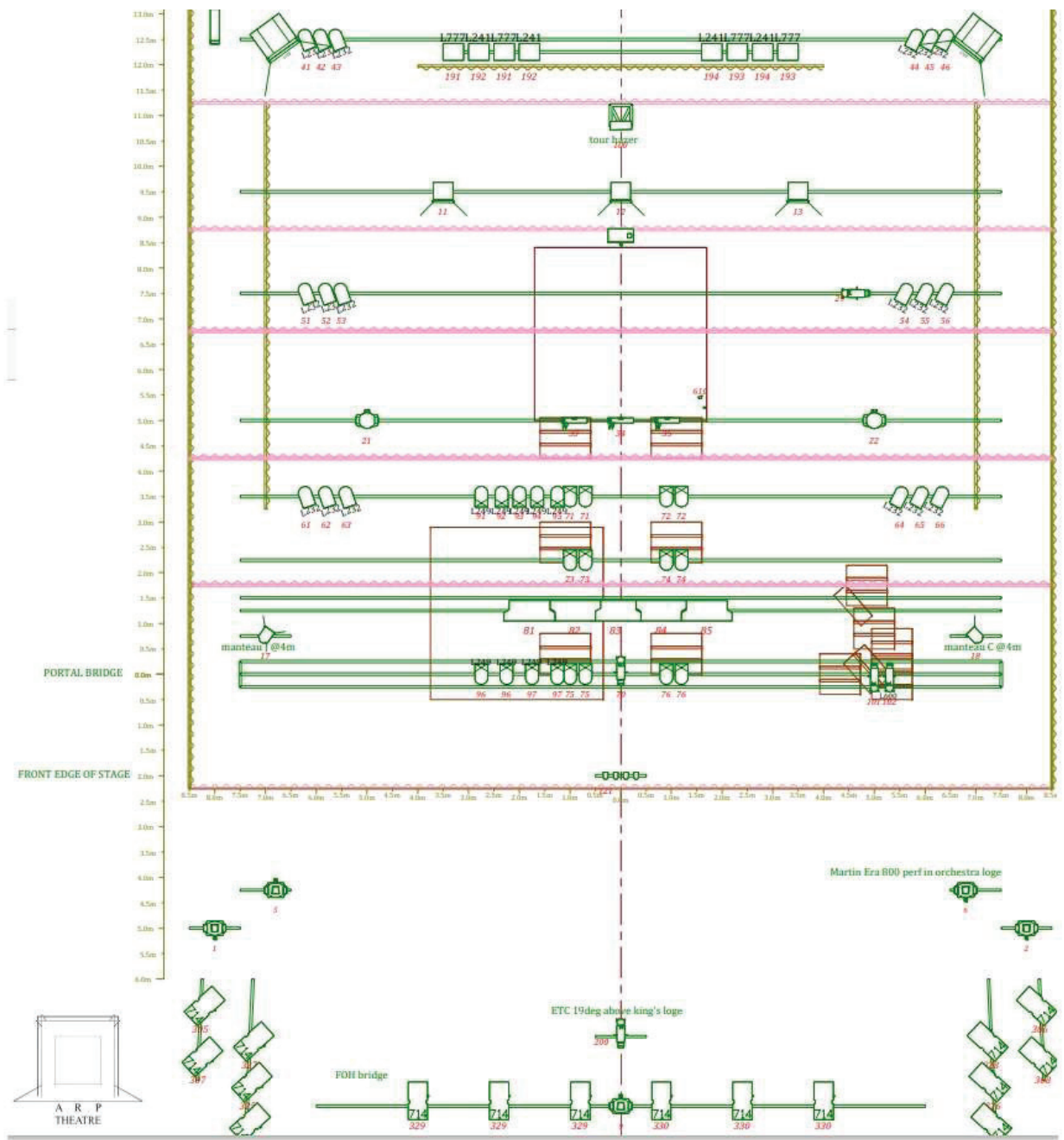
- light control GrandMA2 on PC wing (output: 2x dmx, Artnet, SaCN)
- 8x par16
- Atomic 3000 strobo
- LED strips, in the set
- 1x lamp 1kW, in the set

The organiser provides the following equipment.

- hazer generator MDG ATMe (or similar approved alternative)
- ventilator
- 21x par64 CP60
- 18x par64 CP62
- 5x svoboda (alternative 2x ACL-set ACL + 3x par64 CP60, or a row of par64 CP60)
- 2x fresnel 5kW
- 3x fresnel HMI 4kW of 2,5kW + shutter & barndoors (alternative fresnels 5kW with LEE 600 artic white)
- 8x asymmetric cyc light 1kW
- 3x Impression X4 Bar 10 (or similar approved alternative)
- 2x MAC Quantum Wash (or similar approved alternative)
- 5x Ayrton Ghibli (or similar approved alternative, Era 800 Performance, Robe T1...), on specific places as front light, to be discussed and decided for each theatre
- 5x profile 19°
- 3x profile 50°
- 2x fresnel 2kW
- front: adapted to the configuration of the theatre

- cables: dmx on stage behind the set (for the control of the LED in the set and for the strobe), dmx fo 2x Mac Quantum Wash, 3x Impression X4 Bar 10's, 5x Era 800 Performance, 2 dimmerlines behind the set (for the lamp in the set and for 4x par16 behind the set), 1x dimmerline middle downstage (for 4x par16).

- color gels
LEE 232 super white flame green (18x par64)
LEE 241 fluorescent 5700K (8x cyc light)
LEE 249 quarter minus green (9x par64)
LEE 600 artic white (1x profile)
LEE 728 steel green (2x fresnel 5kW, 2x fresnel 2kW)
LEE 777 rust (4x cyc light),
if necessary, laGeste can bring the missing color gels.



SUR- AND SUBTITELING

The performance *Grandpa Puss ; or how God disappeared* travels with a laptop with Glypheo surtitling software.

The organizer provides een surtitlingsystem, that can be controlled with the Glypheo system of the performance, and a cat5 connection between the system and the place for the surtitle control (with a clear view on the surtitles). The system is installed and tested during the set up day.

During the performance, the surtitles are controlled by the tour manager of the performance.

EFFECTEN

During the performance *Grandpa Puss ; or how God disappeared* we use a Theatrical Flash Large (Lemaitre).

See separate document "vake poes pyro en".
Theatrical Flashes | Le Maitre UK (lemaitreld.com)

DIVERS

Grandpa Puss ; or how God disappeared travels with a truck (11m80 long, with tail lift).

The truck normally arrives on the day before the set up day and leaves the day after the strike.

The organiser provides a secure, closed parking area for the whole period.

Please inform us if there are any restrictions on truck traffic (or low emission zone) in your country, in your city, in weekends, on sundays, on holidays, etc.

If, for any of these restrictions, a special permit is needed for the truck, the organizer provides it.

Everything in this rider, provided by the organizer, is also at the expence of the organiser.

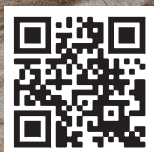
CONTACT

More information :

- technical direction: Jan Mergaert (+32) 495 230 749, jan@lageste.be

WRITTEN
BY
THE
BODY

lageste



www.lageste.be

gent:



Vlaanderen
verbeelding werkt

FLANDERS
TAX
SHELTER

