

technical rider

laGeste

ATELIER laGeste

technical rider (November 2024)

ATELIER laGeste

laGeste

ADDRESS - Atelier laGeste

Nieuwevaart 118 / F007
B - 9000, Ghent



Loading, smallest passage: 2m80 (large) x 2m20 (high).

1

laGeste

technical rider - ATELIER laGeste

STUDIO - Atelier laGeste



Accessibility: the rehearsal studio and ground floor level spaces, including toilet and shower, are wheelchair accessible.

Wooden sprung floor with a surface of approximately 9m x 15m, maximum load 500kg/m².

Ballet floor (black) covers the entire surface of the floor.

The room can be made dark.

White painted brick walls, black cloths on rail on three sides.

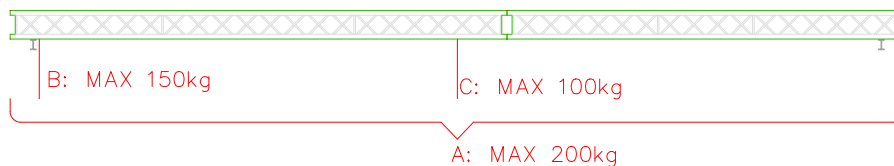
A concrete support beam runs at regular intervals across the width of the hall, the free height below varies from a minimum of 4m43 to 4m50. The free height under the ceiling between the support beams varies from a minimum of 4m83 to 4m95. There are 2 steel I-beams on the sides of the studio. On these beams there are 5 trusses Prolyte X30D (triangle 30cm). Maximum free height under the trusses: 4m42.

Maximum point load close to one of the I profiles is 150kg.

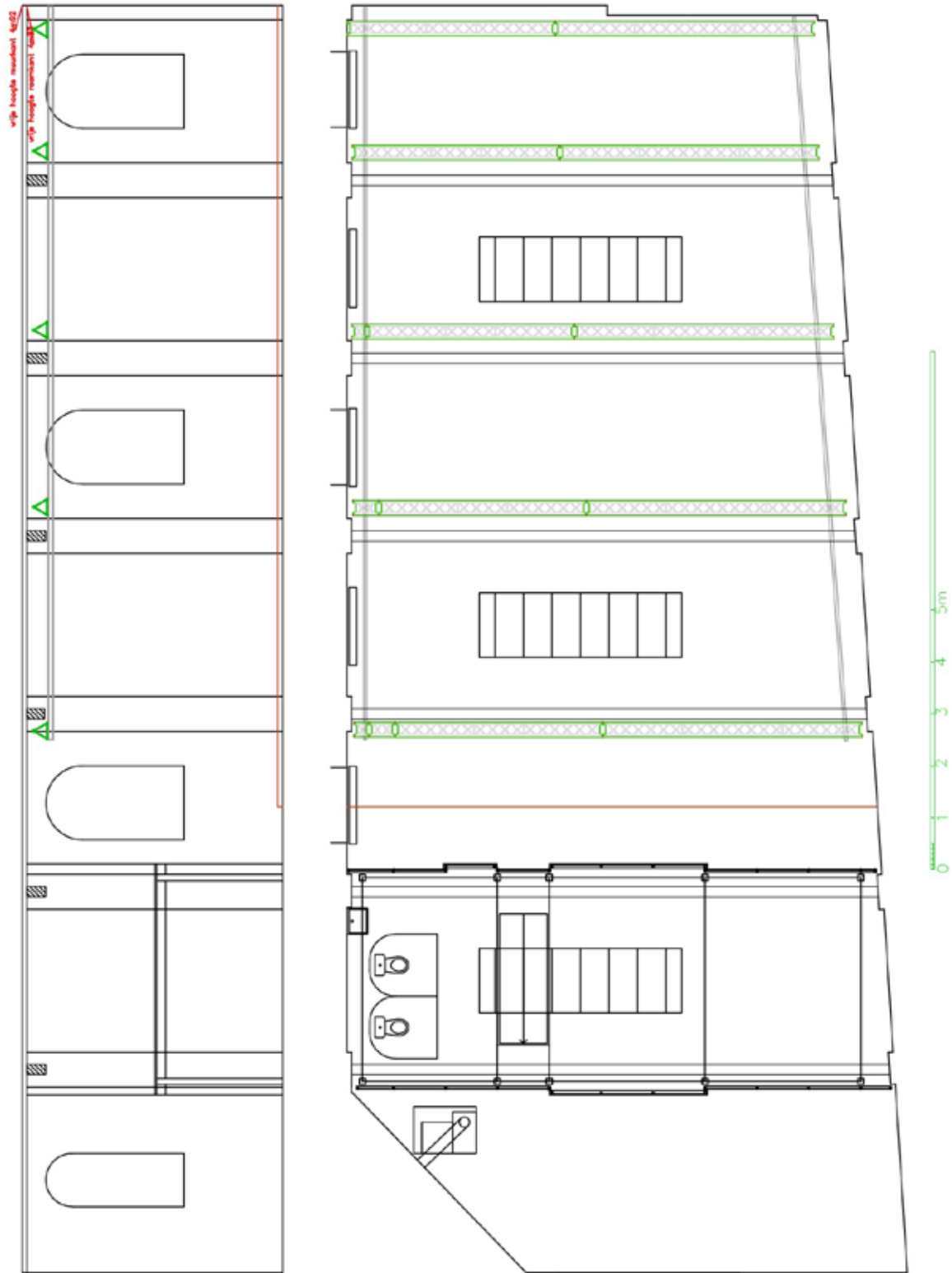
Maximum point load in the middle of the truss is 100kg.

Maximum total load of the entire truss is 200kg.

Maximum number of people in Atelier laGeste: 49.



A: maximale totale belasting verdeeld 200kg
B: maximale puntlast op het I-profiel 150kg
C: maximale puntlast in het midden 100kg



ANCILLARY SPACES - Atelier laGeste

ENTRANCE / GROUND FLOOR



One room with passage from entrance to the studio, with toilet and shower, accessible for wheel-chair users.

FIRST FLOOR



One room with toilet, shower, table, chairs.

SOUND - Atelier laGeste

Sound desk Mackie 1402 VLZ Pro (14ch, 6x mono & 4x stereo)+ adapter 2x jack – stereo mini jack

2x active speaker Mackie SRM 450

LIGHT - Atelier laGeste

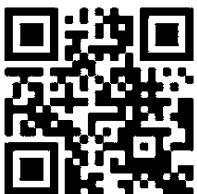
No standard lighting material in this studio.

Cables to the trusses :

- multi with 8 channels in each truss (schuko connection)
- break outs on the spot where there is a 63A connection for dimmers.

CONTACT - Atelier laGeste

Serge Vandenhove - serge@lageste.be



WRITTEN
BY
THE
BODY

laGeste